



FRONT ELEVATION

SCALE: 1/4" = 1'-0"

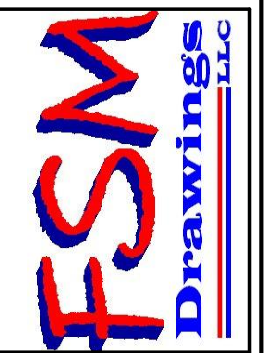
SQUARE FOOTAGE TABLE	
PLAN	SQ. FTG.
FIRST FLOOR	1,522
SECOND FLOOR (UNFIN.)	N/A
TOTAL:	1,522

REFER TO SECTIONS R612.2 FOR WINDOW SILL HEIGHT ABOVE GROUND (OR SURFACE BELOW) AND TO SECTION 310 FOR EGRESS WINDOWS & BASEMENTS PRIOR TO PLACING WINDOW ORDER

REFER TO SECTION 311 FOR MEANS OF EGRESS PRIOR TO ORDERING DOORS

EGRESS NOTE:
 AT LEAST ONE WINDOW PER SLEEPING ROOM TO MEET MINIMUM LOCAL, STATE, AND NATIONAL REQUIREMENTS OF NET CLEAR OPENING WIDTH, HEIGHT, AREA AND SILL HEIGHT FOR EGRESS - IN DWELLING UNITS, WHERE THE OPENING OF AN OPERABLE WINDOW IS LOCATED MORE THAN 72" ABOVE FINISHED GRADE OR SURFACE BELOW, THE LOWEST PART OF THE CLEAR OPENING OF THE WINDOW SHALL BE A MINIMUM OF 24" ABOVE THE FINISHED FLOOR IN WHICH THE WINDOW IS LOCATED (REFER TO SECTION R613.2 OF THE I.R.C. 2009)

ADMISSION OF ERROR, OMISSION AND/OR OVERSIGHT: WHILE IT IS OUR INTENT TO DELIVER OUR SERVICES FREE OF ERROR, OMISSION OR OVERSIGHT, WE WILL ADMIT TO BE HUMAN AND, THEREFORE, FSM DRAWINGS LLC, ACTING SOLELY AS THE DRAFTING COMPANY, WILL RELY ON THE EXPERIENCE OF THE ARCHITECT OR USER OF THESE PLANS. WE DO NOT ASSUME ANY LIABILITY FOR ANY ERRORS OR OMISSIONS IN THESE PLANS. THE CONTRACTOR USING THESE PLANS ASSUMES ALL RESPONSIBILITY FOR THEM AND WILL IF HE/SHE DEEMS NECESSARY HIRE A LICENSED PROFESSIONAL ENGINEER TO ASSIST IN THE REVIEW.



THE SPRUCE - SUGARPLUM HILL CONDOMINIUMS
 LONDONDERRY, NEW HAMPSHIRE

PREPARED FOR: **MESITI** CORPORATION
 ENVIRONMENTAL

DRAWN BY:	MM
CHECKED BY:	PD
DATE DRAWN:	12/21/10
DATE ISSUED:	12/22/10
SCALE:	1/4" = 1'-0"
JOB NO.:	FSM10150CA

NO.	DATE	REVISION
1	12/21/10	PRELIMINARY PLAN ISSUED FOR REVIEW
2	12/22/10	REVISE PRELIMINARY PLAN

SHEET
1b
 OF 2 SHEETS